

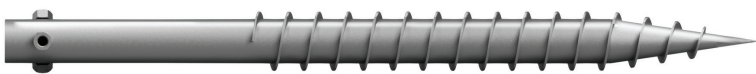


## STANDARD SPECIFICATIONS

**Engineering:** ASCE 7-10/7-16/CPP Wind Tunnel Tested  
**Grounding:** Fully Integrated UL2703  
**Foundation:** Dual Ground Screw  
**Tilt Angles:** 5°-35° Tilt Options  
**Racking Coating:** Galvanized; G90  
**Foundation Coating:** HDG  
**Wind Loading:** Up to 165mph  
**Snow Loading:** Up to 100psf  
**Mounting Orientation:** 2-High in Portrait  
**Warranty:** 25 Years

## DUAL GROUND SCREWS

TITAN Duo is designed to tackle the most challenging sites. The dual ground screw foundation is the perfect solution for glacial till, cobble, hardpan, or solid bedrock. The heavy walled tube and welded connections allow for massive amounts of torque and pressure to be applied, helping the screw advance into the toughest soils.



## TITAN<sup>DUO</sup>

Designed by installers for installers, TITAN™ is the most advanced hardware in the industry. TITAN's unique asymmetrical design and innovative features allow for flexibility in the field while streamlining the install process. With the lowest part count per MW, integrated grounding and cable trays, and the fully integrated, patented module Gravity Clip™, TITAN is installers preferred choice. The 3-rail design is an excellent solution for bifacial modules with low backside shading. TITAN Duo comes standard with dual 3" diameter ground screws for rocky soil conditions.

*In business since 2008, APA offers a versatile line of racking and foundation solutions for projects in even the most challenging environments. With projects nationwide, APA is a trusted racking partner.*

# WHY USE TITAN DUO™?

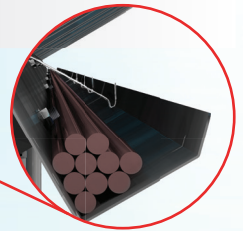
## ASYMMETRICAL 3-RAIL DESIGN

- 25% Less East-West rails
- Lowest part count per MW
- 2-High Portrait, ideal for split cell modules
- Low back panel shading for bifacial modules



## WIRE MANAGEMENT

Integrated cable trays and custom wire clips keep your project organized, safe, and code compliant for the life of the project, without costly third-party solutions.

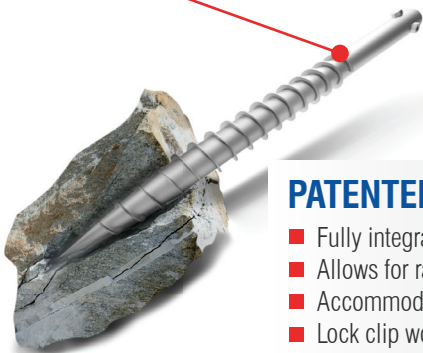


## TELESCOPING POST

Allows for quick adjustment in the field for high degrees of topography on site.

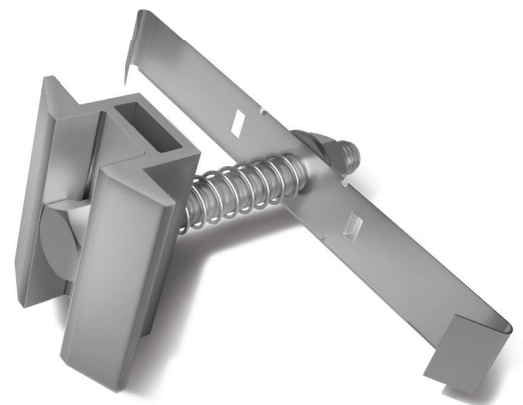
## GROUND SCREWS STANDARD

TITAN Duo is specifically designed for sites with glacial till, cobble, hardpan and bedrock.



## PATENTED GRAVITY CLIP™

- Fully integrated module grounding
- Allows for rapid installation of modules
- Accommodates different module widths
- Lock clip won't loosen from ice for vibrations



## ADJUSTABLE BRACING

C-channel bracing allows for easy adjustments in the field.